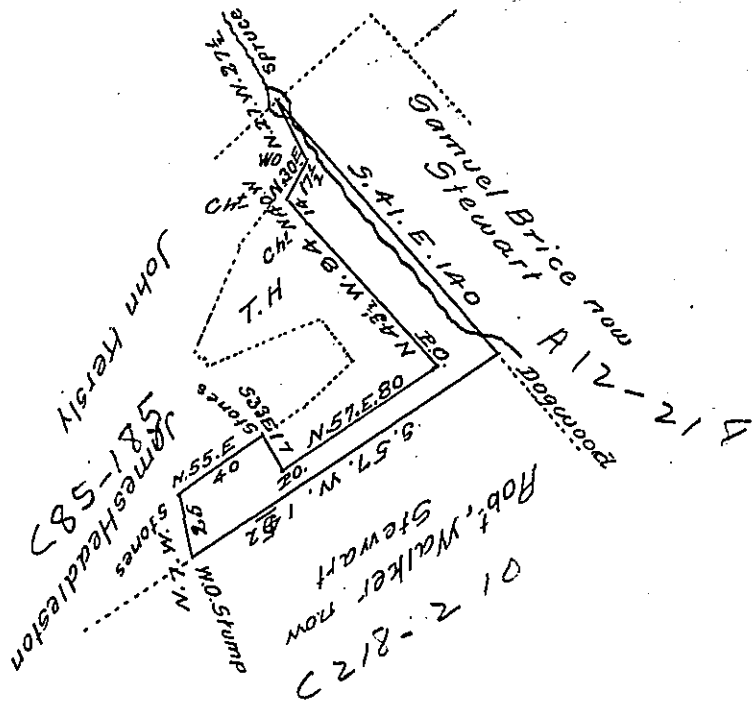


Courses & Distances

- N 55 E 40 Post
- S 33 E 17 Post & Stones
- N 57 E 80 Stone heap
- N 43 1/2 W 84 Chest Or
- N 40 W 14 Chest
- N 30 E 17 1/2 Dead Spuce
- S 41 E 140 Dogwood
- S 57 W 152 W.O. Stump
- N 7 W 25 stone heap



*Draught of Twenty four acres and nine perches of land with 6 p Cent for roads situate in Millford township in Mifflin Courty Surveyed 25<sup>th</sup> July 1808 in pursuance of a Warrant to John Moffit dated \* 17<sup>th</sup> October 1774*

*James Harris D.S.*

*\* say 7<sup>th</sup> Oct 1774*

*Samuel Cochran Esquire*

*Surreyor General of Pennsylvania*

*IN TESTIMONY that the above is a copy of the original remaining on file in the Department of Internal Affairs of Pennsylvania, made comformably to an Act of Assembly approved the 16th day of February 1833, I have hereunto set my hand and caused the Seal of said Department to be affixed at Harrisburg, this third day of November 1907*

*Henry Howell*  
Secretary of Internal Affairs.